

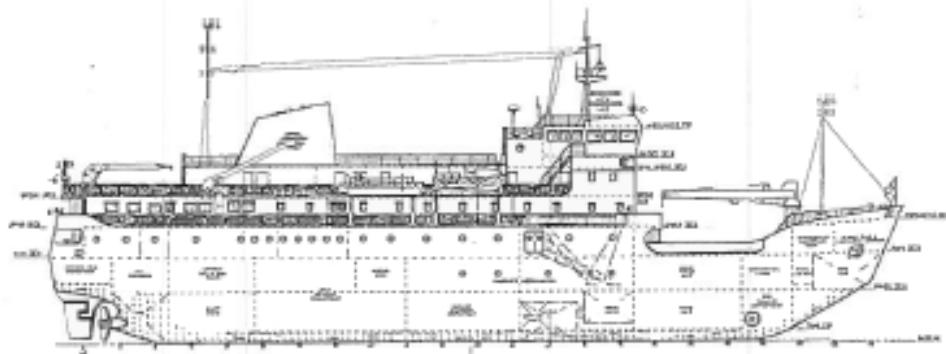


Vessel Info

VESSEL TYPE:

Passenger/Cargo

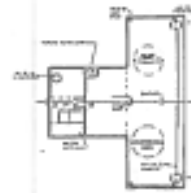
Year Built	1986	Length (BP)	66.67m
Yard	Port Weller Dockyard	Breadth (M)	15.6m
Official Number	803748	Depth (moulded)	7.60m
Port of Registry	St. John's, NL	Draft	4.25m
Gross Tonnage	2573	Service Speed/Consumption	14.5 knots/12MT/day
Lightship(MT)	1692	Passengers	131
Length OA	72 m	Vehicles	N/A
Generator	MAN D0266 MIE	Main Engine	1583 kW MAN B & W 8L28/32



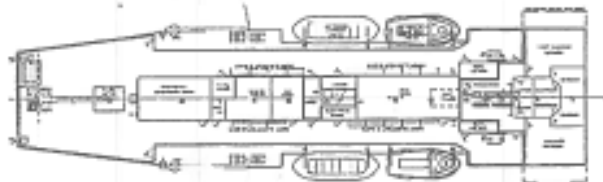
II
OUTSIDE PROFILE



LONGITUDINAL SECTION DECK



SECTION DECK



SECTION DECK



LOWER DECK

FORECASTLE DECK



MAIN DECK

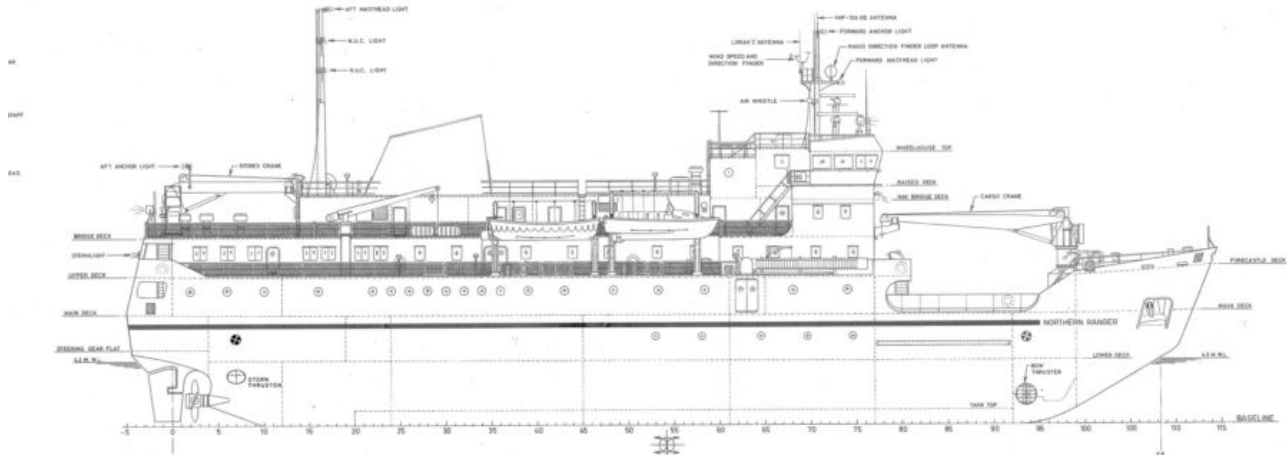


LOWER DECK



MAIN DECK

Side Profiles of vessel

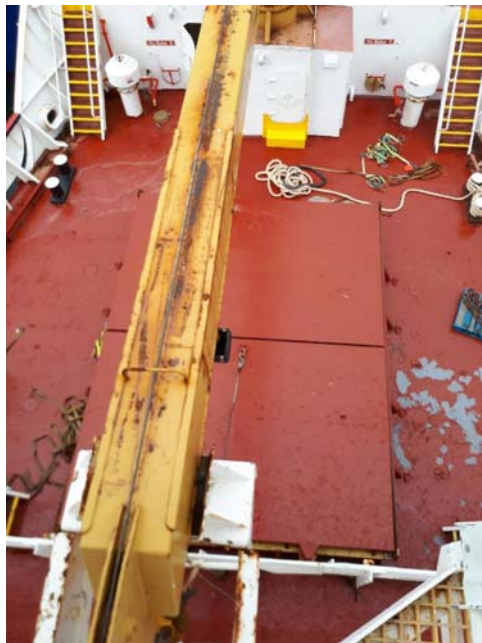
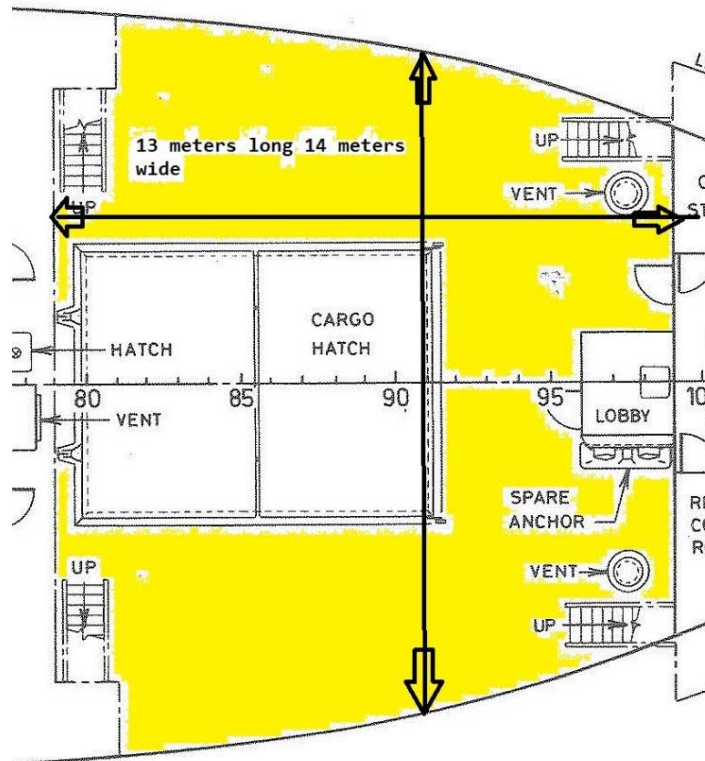


Deck space

Forward main deck

13 meters long by 14 meters wide

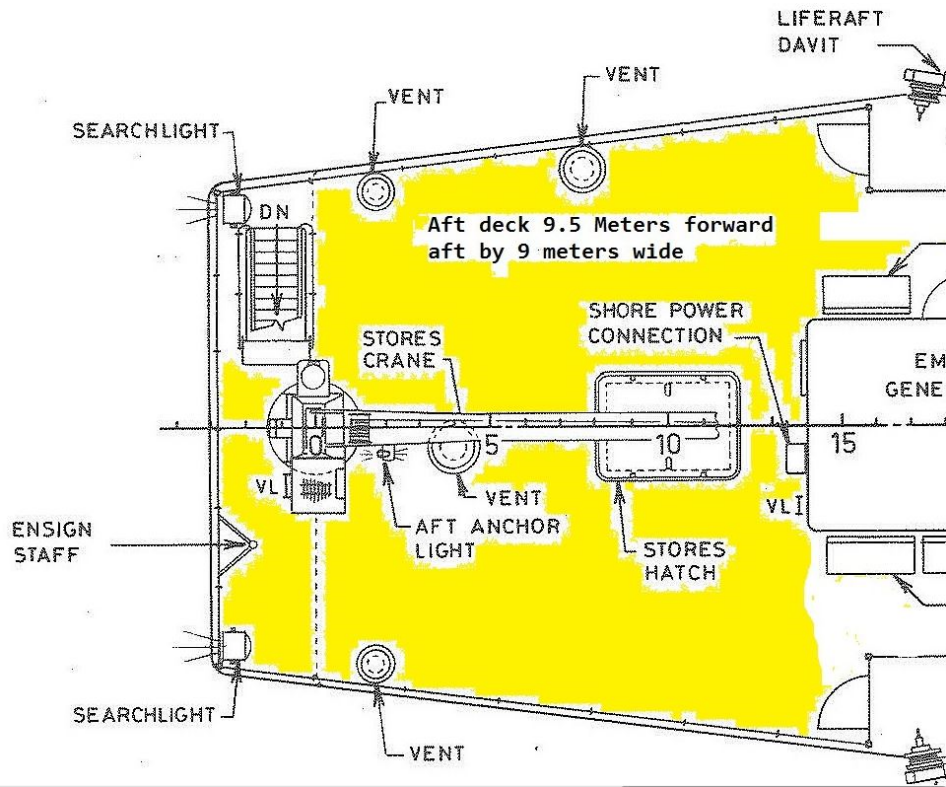
14 ton crane



Bridge deck aft

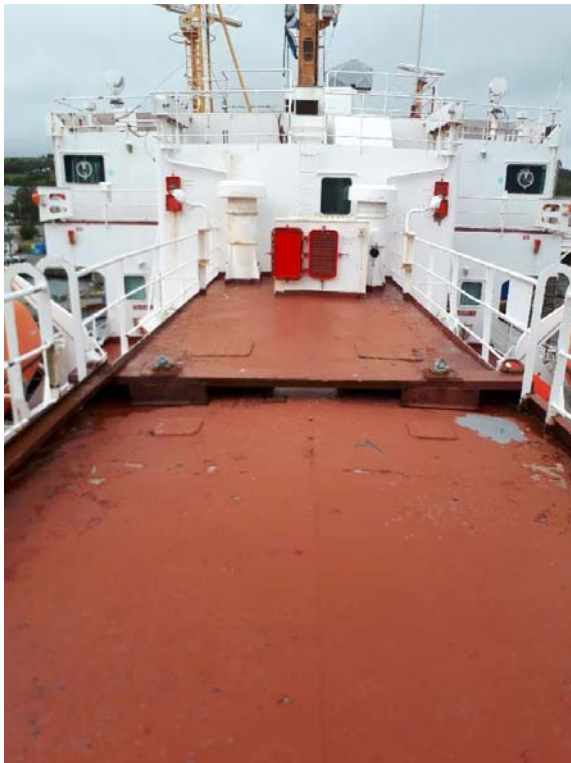
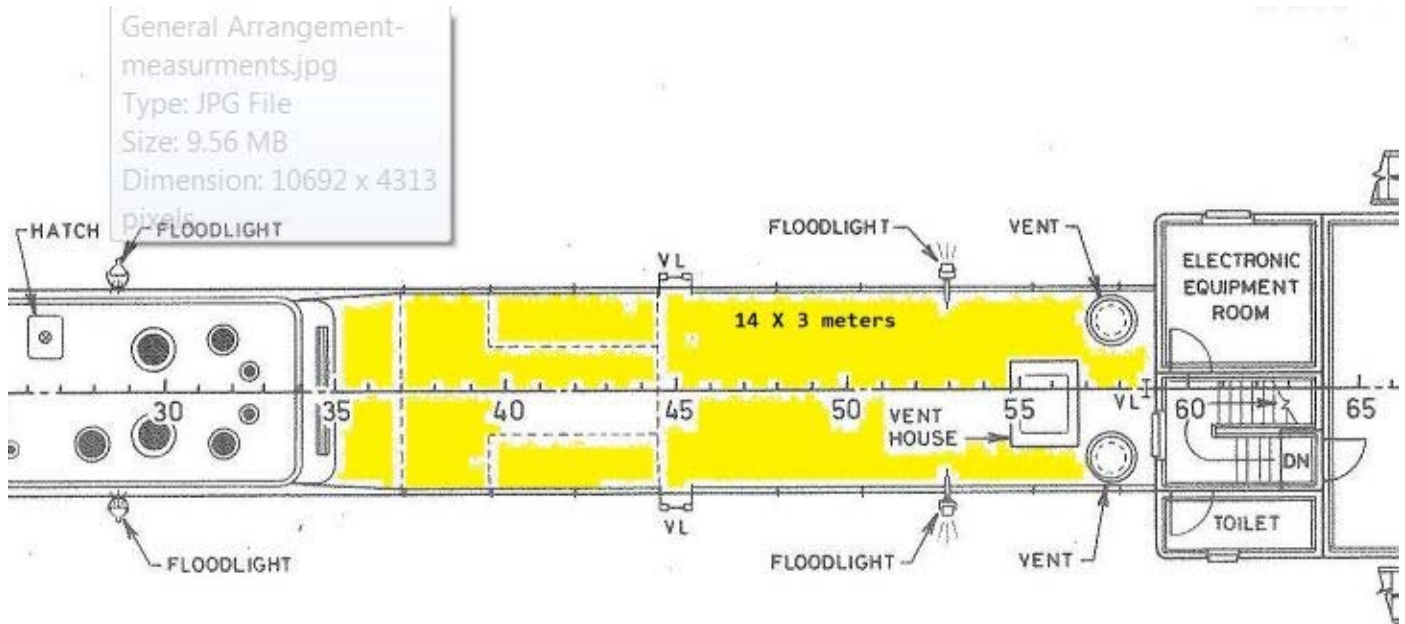
9.5 meters long by 9 meters wide

3 ton crane



Funnel deck

14 meters by 3 meters



Bridge deck port and stbd
30 meters long by 2 meters wide



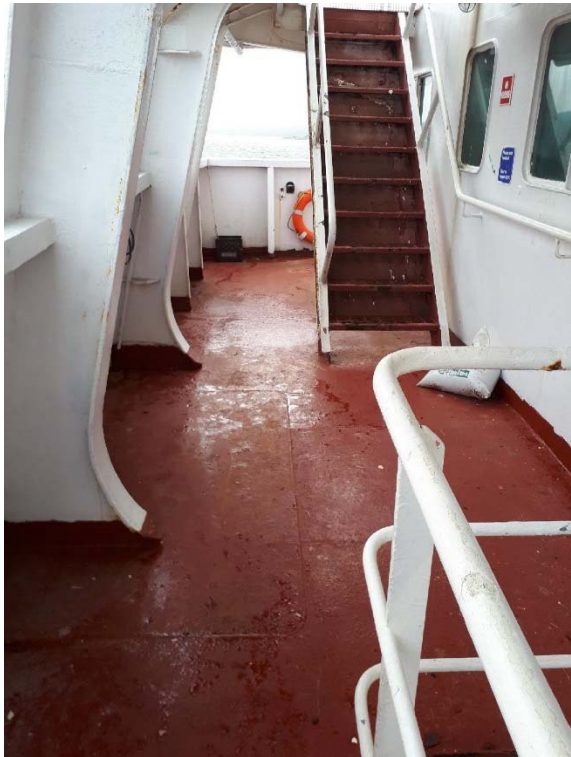
Upper deck
40 meters by 2 meters





Poop deck

3 meters long by 10 meters long



Upper deck forward

14 meters wide by 1 meter long



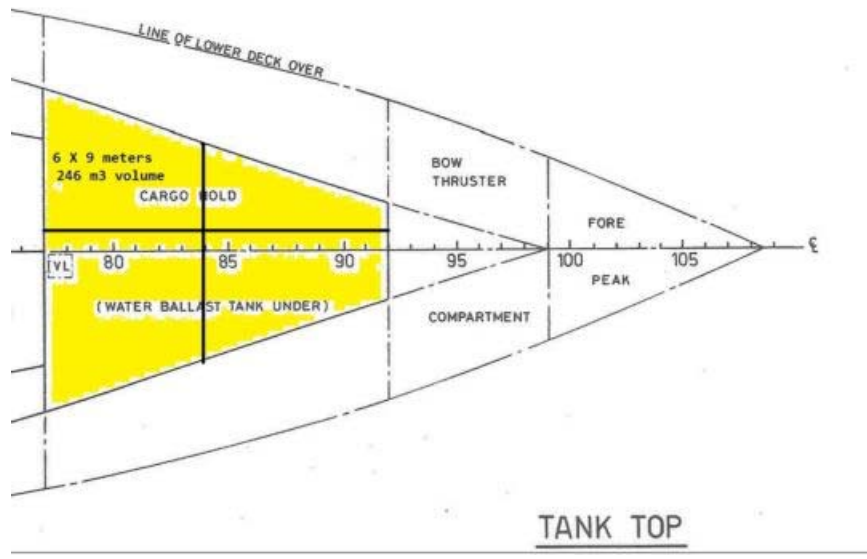
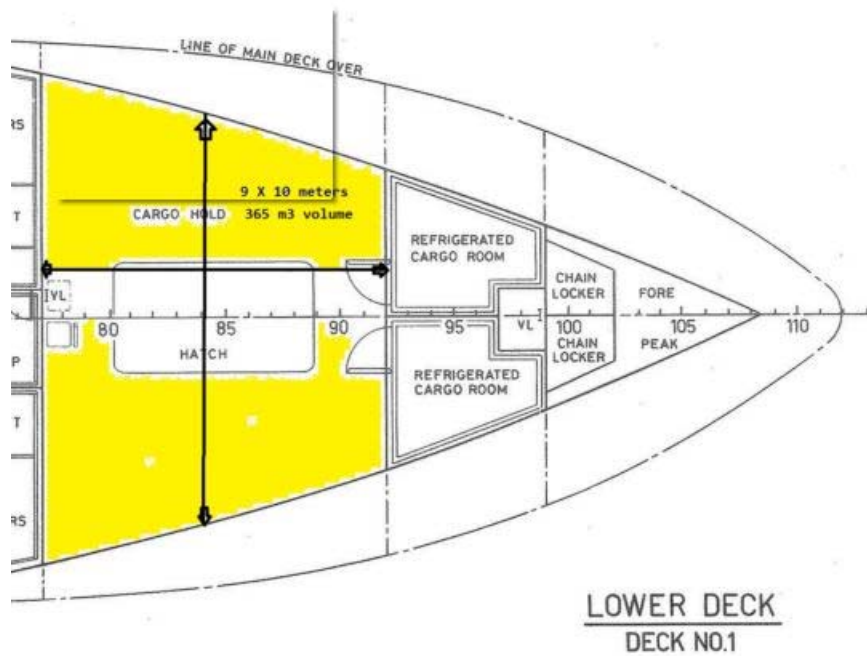
Deck space over all view

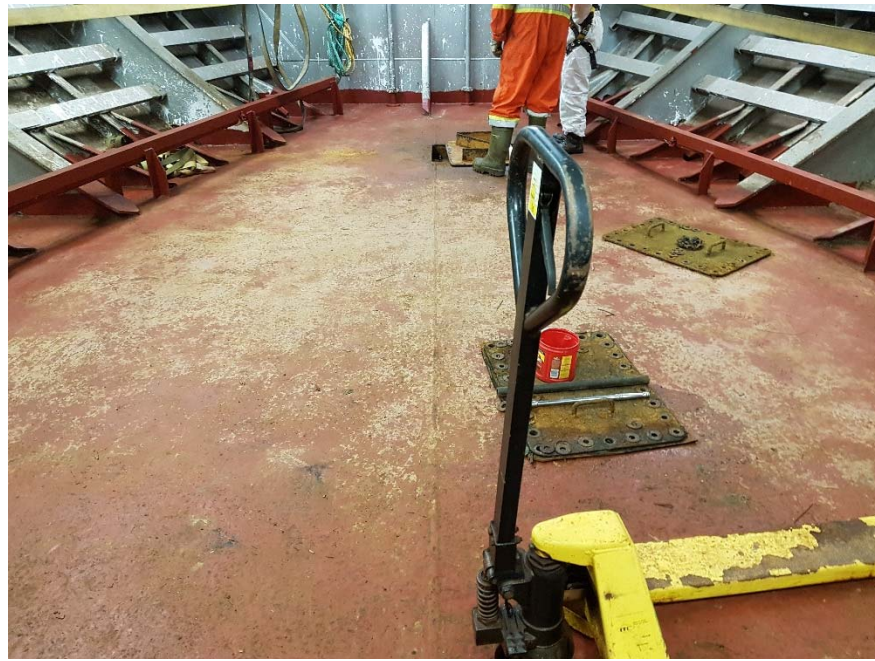
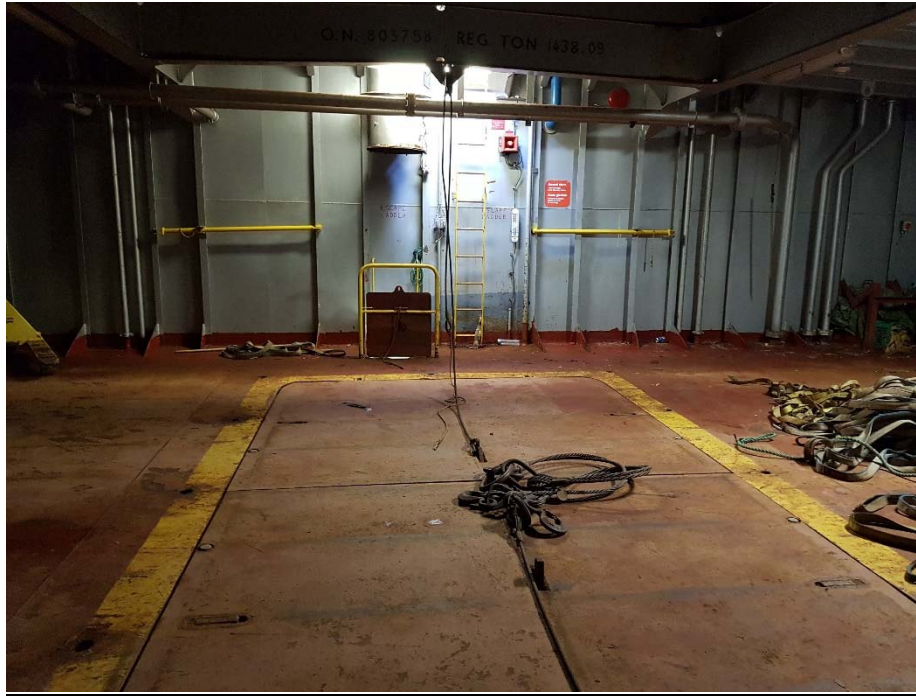


Cargo space

Space 1: 9 X 10 meters with 365 m3 volume

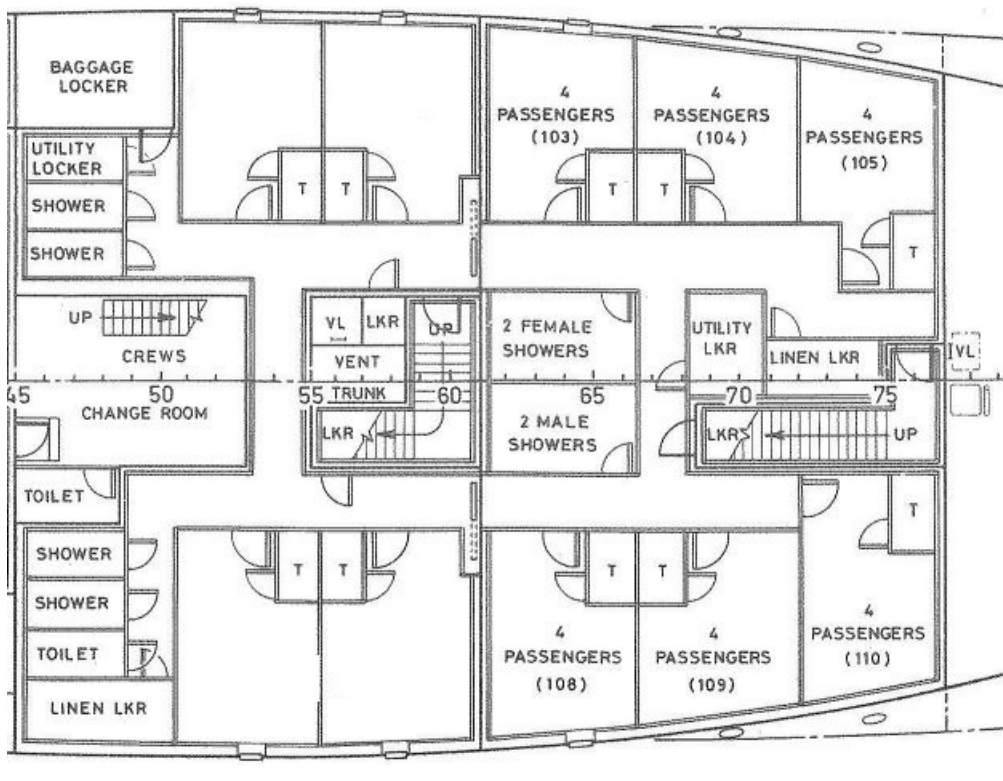
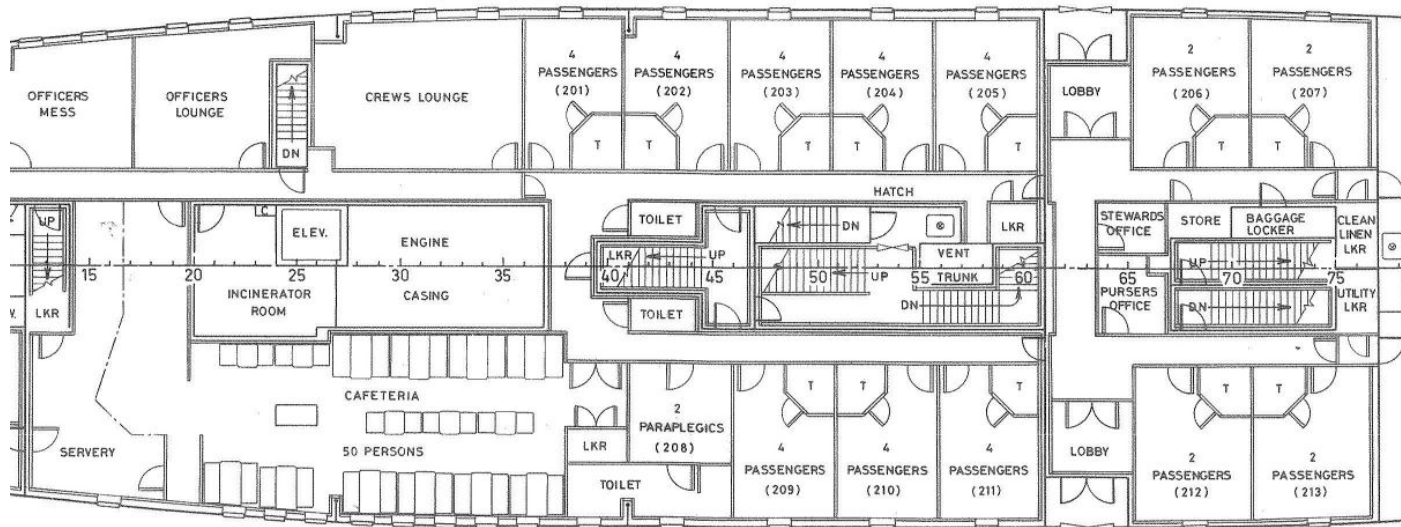
Space 2: 6 x 9 meters with 246 m3 volume





Internal spaces

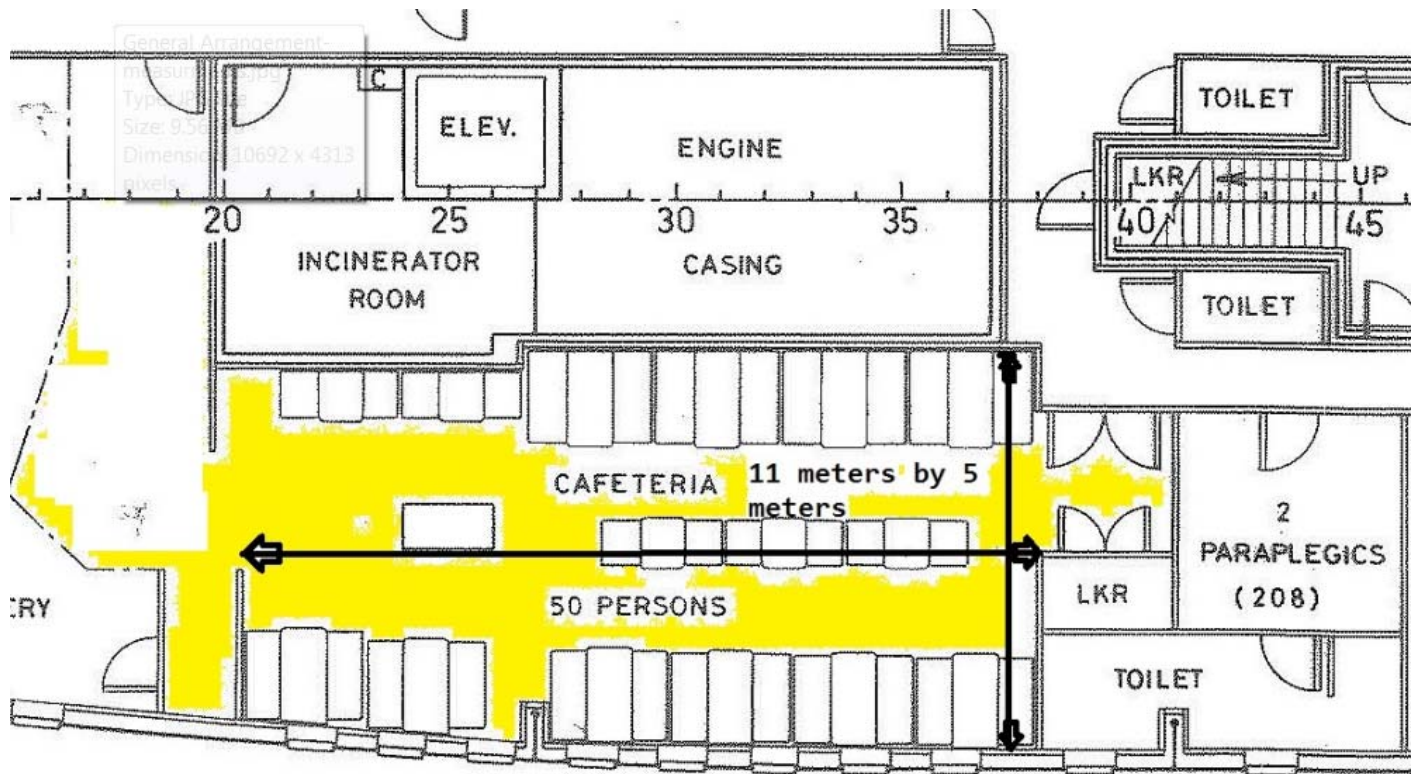
16 cabins available for usage as per GA

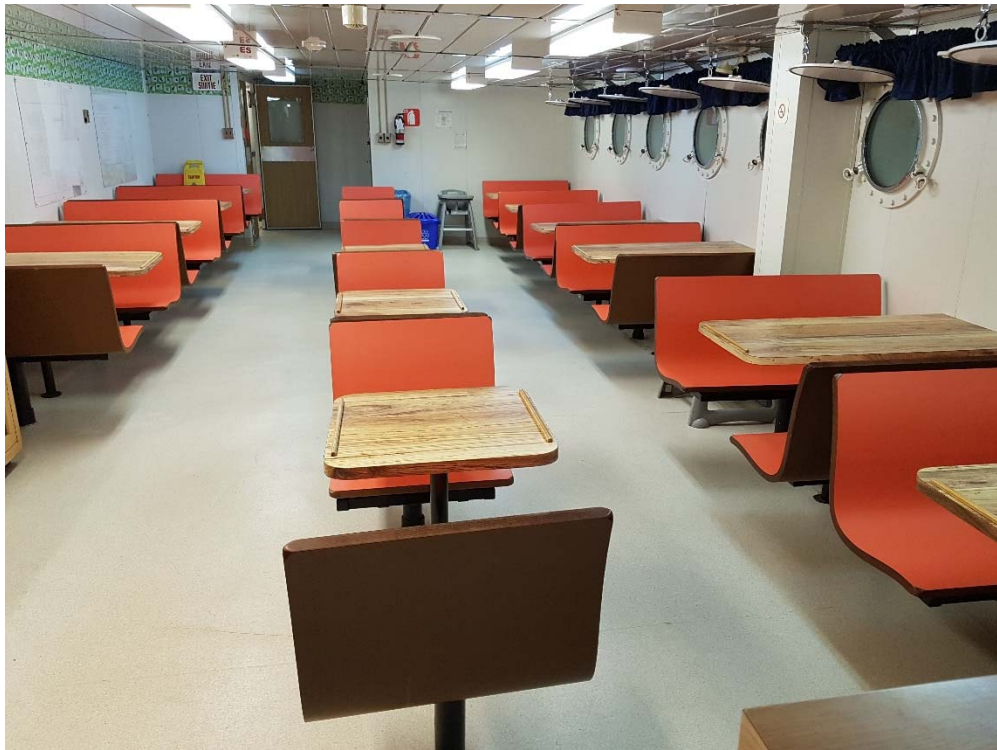






Mess room main deck



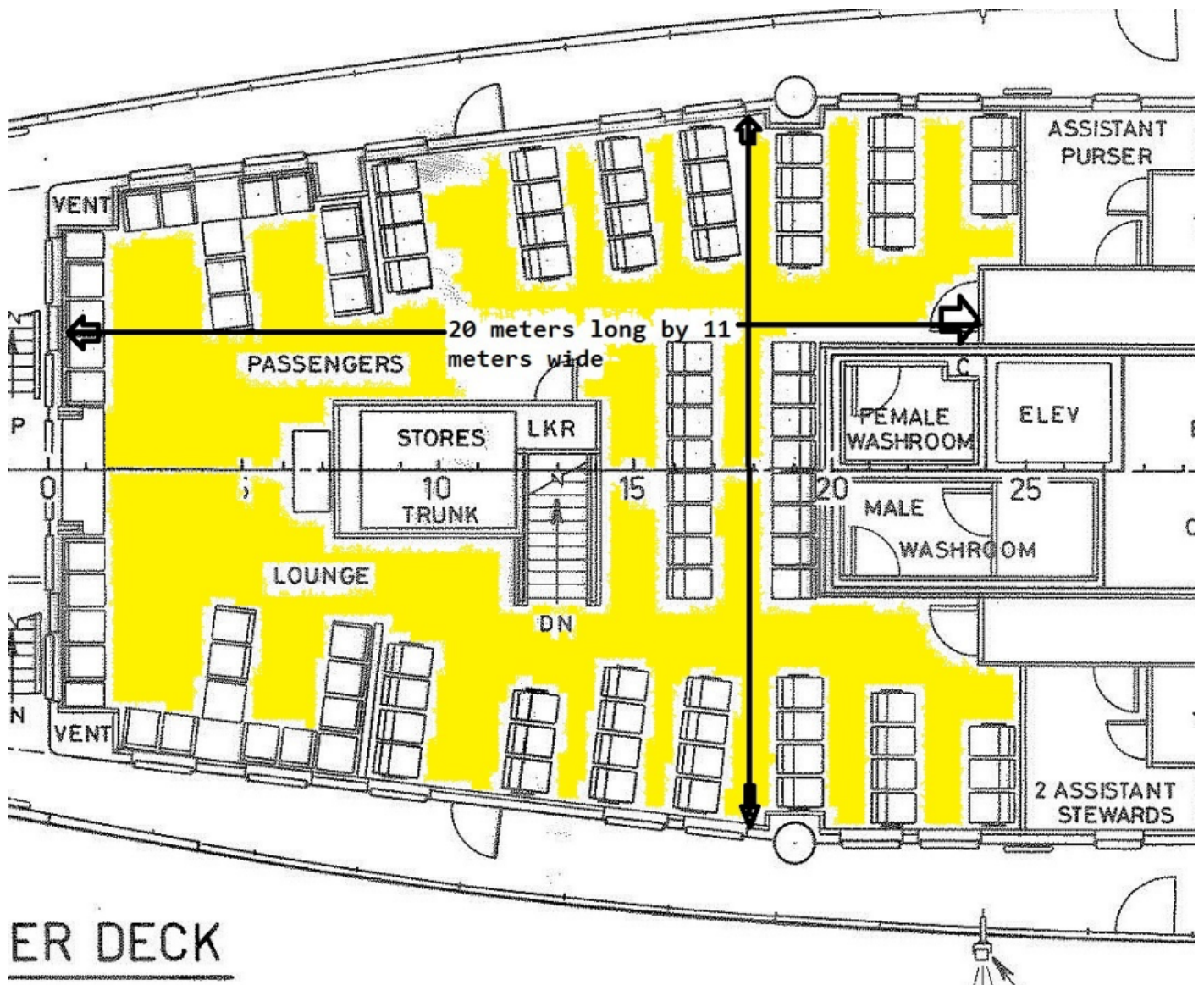


Passenger Lounge

20 meters by 11 meters

2 washroom on forward end of lounge with water supply

Chairs can be removed for lab space







Possible lab space

4 cabins lower deck 3 by 4 meters

Empty cabins with water supply

